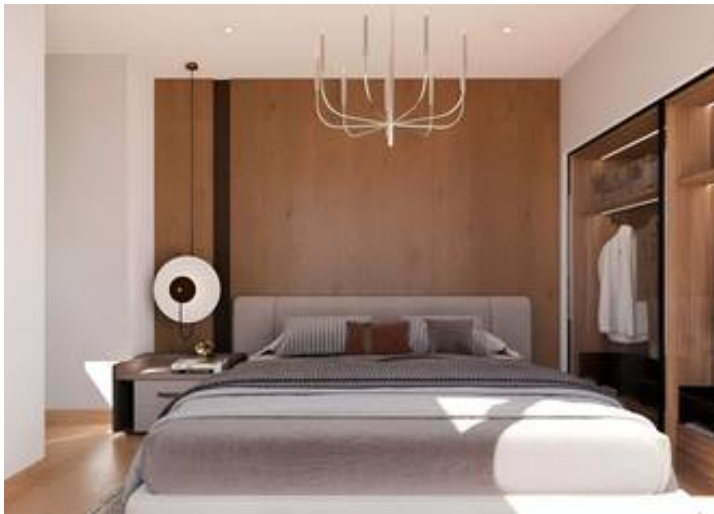


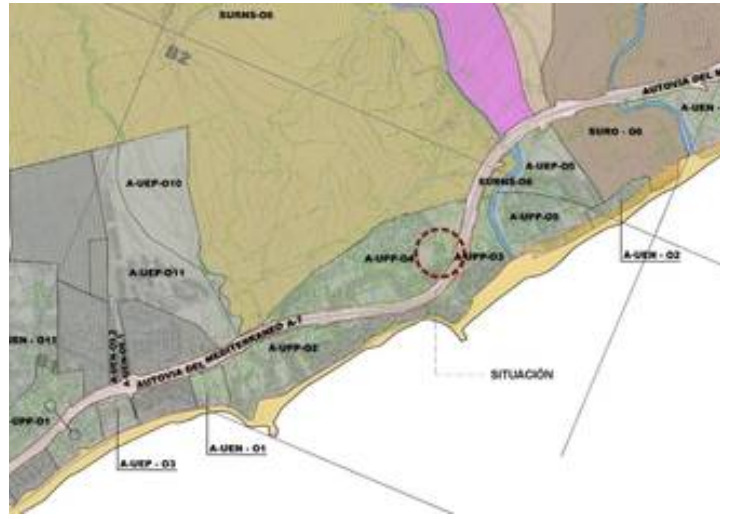
## Description

EXCLUSIVE SEMI-DETACHED HOUSE IN BAHÍA DORADA (WEST ESTEPONA) WITH PANORAMIC SEA VIEWS.

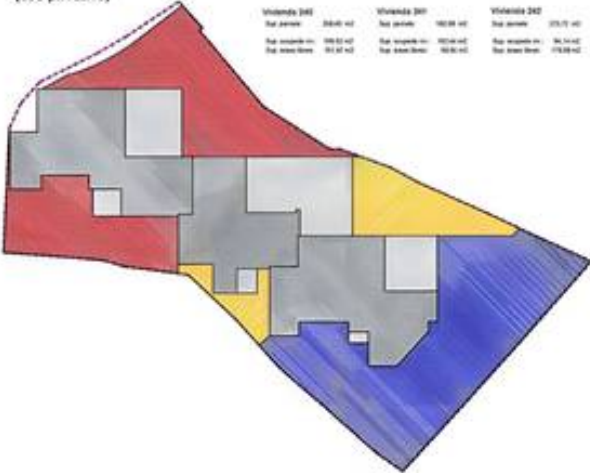
Located in one of the most desirable regions of the Costa del Sol, this contemporary semi-detached residence is part of a prestigious project comprising only three homes, two of which are semi-detached. Due to its elevated location, it provides breathtaking sea views just 500 meters from the beach. The property is situated 1.5 km from Estepona Golf, a mere 5 minutes from Estepona Marina, and 10 minutes from Puerto de la Duquesa.

Spread across two floors facing southeast, it is distinguished by its ample natural light and sophisticated design, featuring high-quality materials throughout. The kitchen is fully equipped with top-of-the-line appliances, and the property boasts an arothermal water system along with premium porcelain tiles, ensuring both efficiency and comfort. Additionally, it includes a spacious terrace and a private garden, creating an ideal environment for enjoying unforgettable moments wit...





**Parcelación propuesta (uso privativo)**



**Planta Top**



**Vivienda 240**

**Planta Top**

- Hall: 2,24 m<sup>2</sup>
- Cocina: 1,75 m<sup>2</sup>
- Baño: 2,20 m<sup>2</sup>
- Comedor: 2,40 m<sup>2</sup>
- Sala: 2,40 m<sup>2</sup>
- Dormitorio: 1,20 m<sup>2</sup>
- Dormitorio: 1,20 m<sup>2</sup>
- Sala: 2,20 m<sup>2</sup>
- Total: 17,60 m<sup>2</sup>
- Total uso privativo: 30,00 m<sup>2</sup>

**Planta Primera**

- Cocina: 1,20 m<sup>2</sup>
- Baño: 1,20 m<sup>2</sup>
- Comedor: 1,20 m<sup>2</sup>
- Sala: 1,20 m<sup>2</sup>
- Dormitorio: 1,20 m<sup>2</sup>
- Dormitorio: 1,20 m<sup>2</sup>
- Sala: 1,20 m<sup>2</sup>
- Total: 10,80 m<sup>2</sup>
- Total uso privativo: 40,80 m<sup>2</sup>
- Total parcela: 106,52 m<sup>2</sup>
- Total uso privativo: 106,52 m<sup>2</sup>
- Total parcela: 106,52 m<sup>2</sup>

**Planta Primera**



**Total parcela**

- Total uso privativo: 106,52 m<sup>2</sup>
- Total parcela: 106,52 m<sup>2</sup>
- Total parcela: 106,52 m<sup>2</sup>