

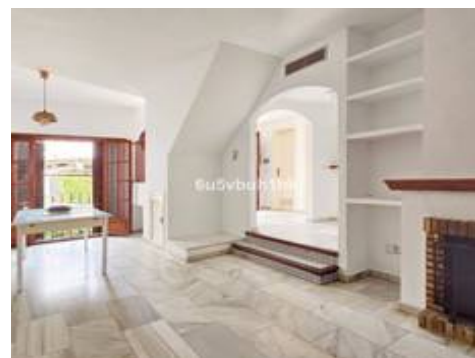


Tow

pona

469.000 €

2 2 96m² 10m²



Description

Located in the established Bahia Azul urbanisation, this traditional Spanish house offers an excellent opportunity to acquire a property with direct access to the beach and communal amenities.

The property features two bedrooms and benefits from an upstairs terrace with sea views as well as downstairs patio with access to communal garden and pool. While the house maintains its original character, it requires a minor update to suit individual preferences.

Key Features:

Two bedrooms

Upstairs terrace with sea views

One-minute walk to the beach and access to boardwalk along the front to Estepona Port

Access to two communal swimming pools and padel court...







