



# Semi-Detached House in San Pedro de Alcántara

## Description

Elegant Townhouse – A Tranquil Residential Oasis

Located in the sought-after Tiro de Pichón urbanization, between San Pedro Alcántara and Guadalmina, this semi-detached home offers a peaceful residential setting with direct access to major roads.

Situated on a corner plot, the property enjoys additional spa...

Price: **990.000 €**

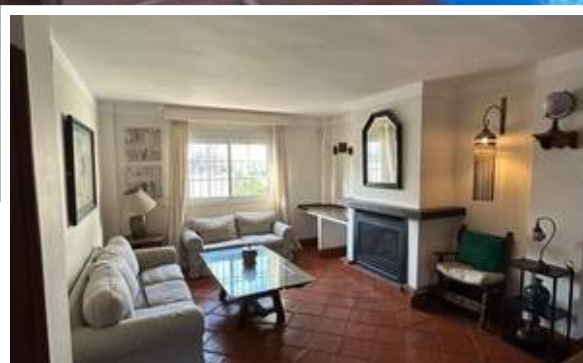
Bedrooms: 4

Bathrooms: 3

Built: 440m<sup>2</sup>

Plot:

Terrace:



Marbella

[info@bestliving.es](mailto:info@bestliving.es)

+34 747 471 108