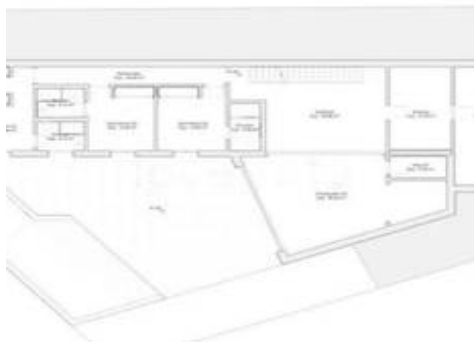


Resident

Romano

275.000 €

627m<sup>2</sup>



## Description

Residential Plot, Valle Romano, Costa del Sol.  
Garden/Plot 627 m<sup>2</sup>.

Setting : Frontline Golf, Close To Golf, Close To Schools, Urbanisation.

Orientation : South, South West.

Condition : Excellent.

Pool : Room For Pool.

Views : Sea, Golf.

Garden : Private.

Category : Golf, Resale.

