



## Description

Big plot with building license in La Cala golf. Sea and mountain views.

Residential Plot, La Cala Golf, Costa del Sol.

Garden/Plot 2763 m<sup>2</sup>.

Setting : Country, Mountain Pueblo, Close To Golf, Close To Schools, Close To Forest.

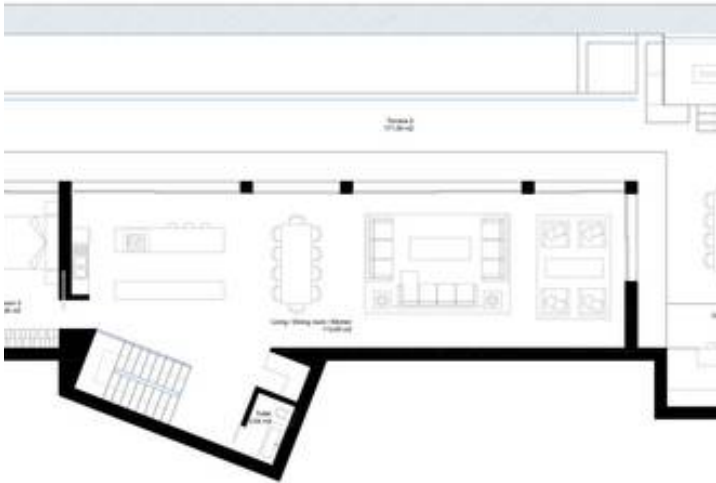
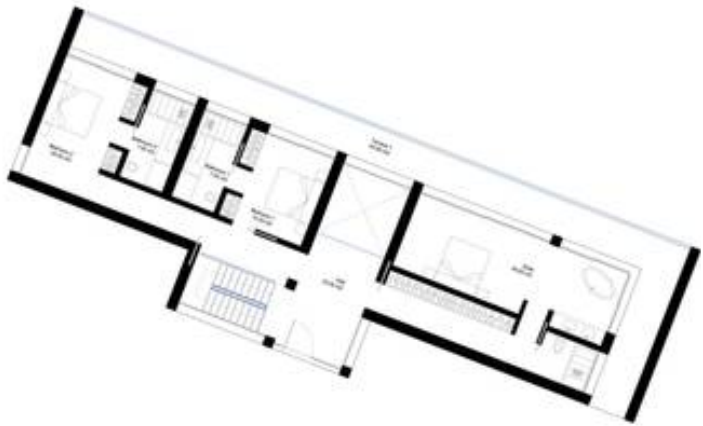
Orientation : East, South East, South.

Pool : Room For Pool.

Views : Sea, Mountain, Golf, Panoramic.

Utilities : Electricity, Drinkable Water.

Category : Off Plan.



FIRST FLOOR



GROUND FLC

