



Residential Plot in Benalmadena

Description

Magnificent 2,000 m² plot with stunning sea views, located in Torremuelle, one of the most exclusive and peaceful residential areas between Fuengirola and Benalmádena, just 600 metres from the beach.

LICENCE GRANTED

The plot is sold with a project for the construction of a high-end detached house, distributed over three floors above...

Price: **630.000 €**

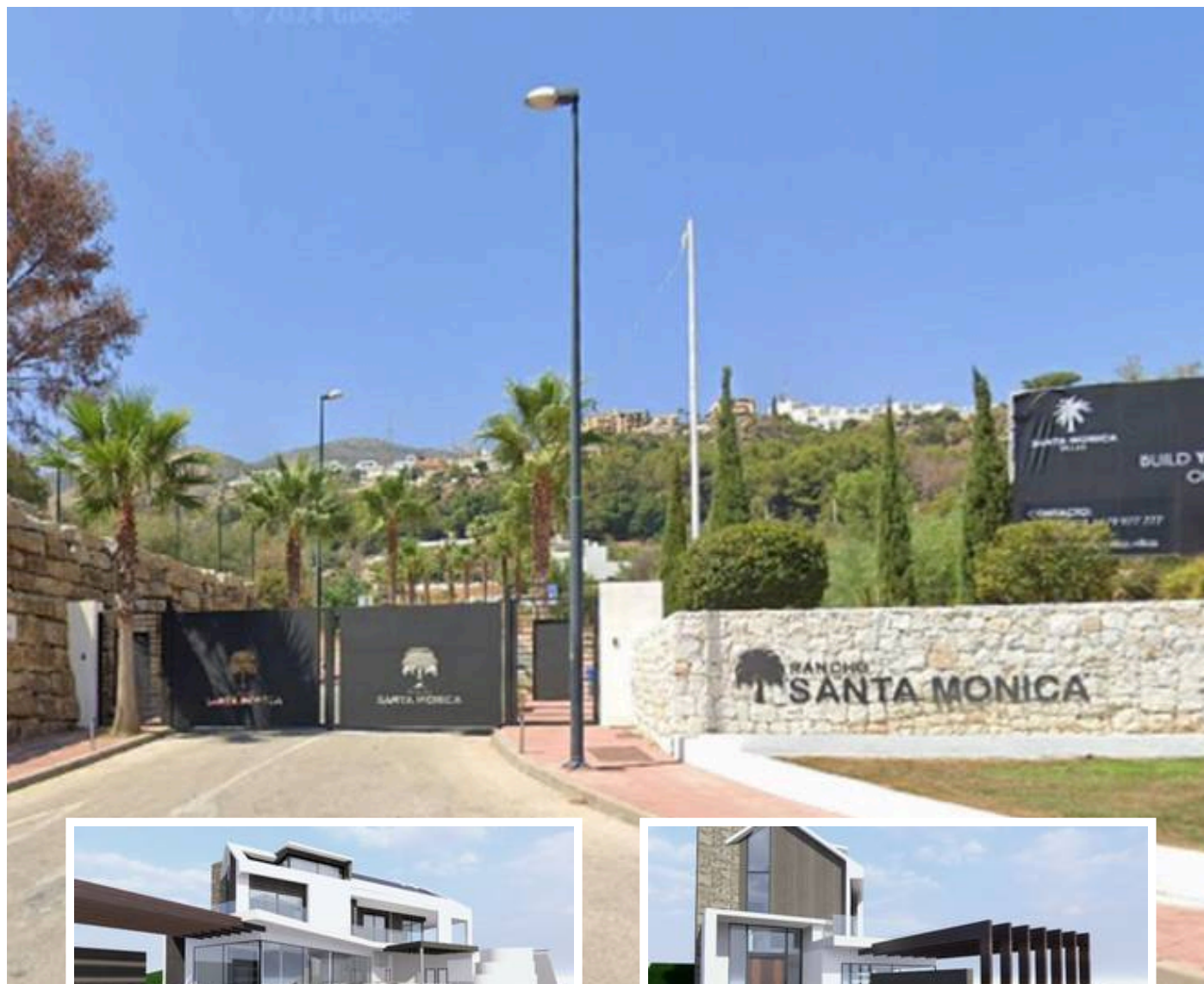
Bedrooms: 0

Bathrooms: 0

Built:

Plot: 2.000m²

Terrace:



Marbella

info@bestliving.es

+34 747 471 108