



# Penthouse in Benalmadena Pueblo

## Description

FRONTAL SEA VIEWS FROM THE ENTIRE HOME.

Exclusive penthouse with panoramic sea views.

Enjoy a spectacular penthouse with frontal sea views from the entire home. A light-filled space with total privacy, located just a 5-minute walk from the town center.

...

Price: **620.000 €**

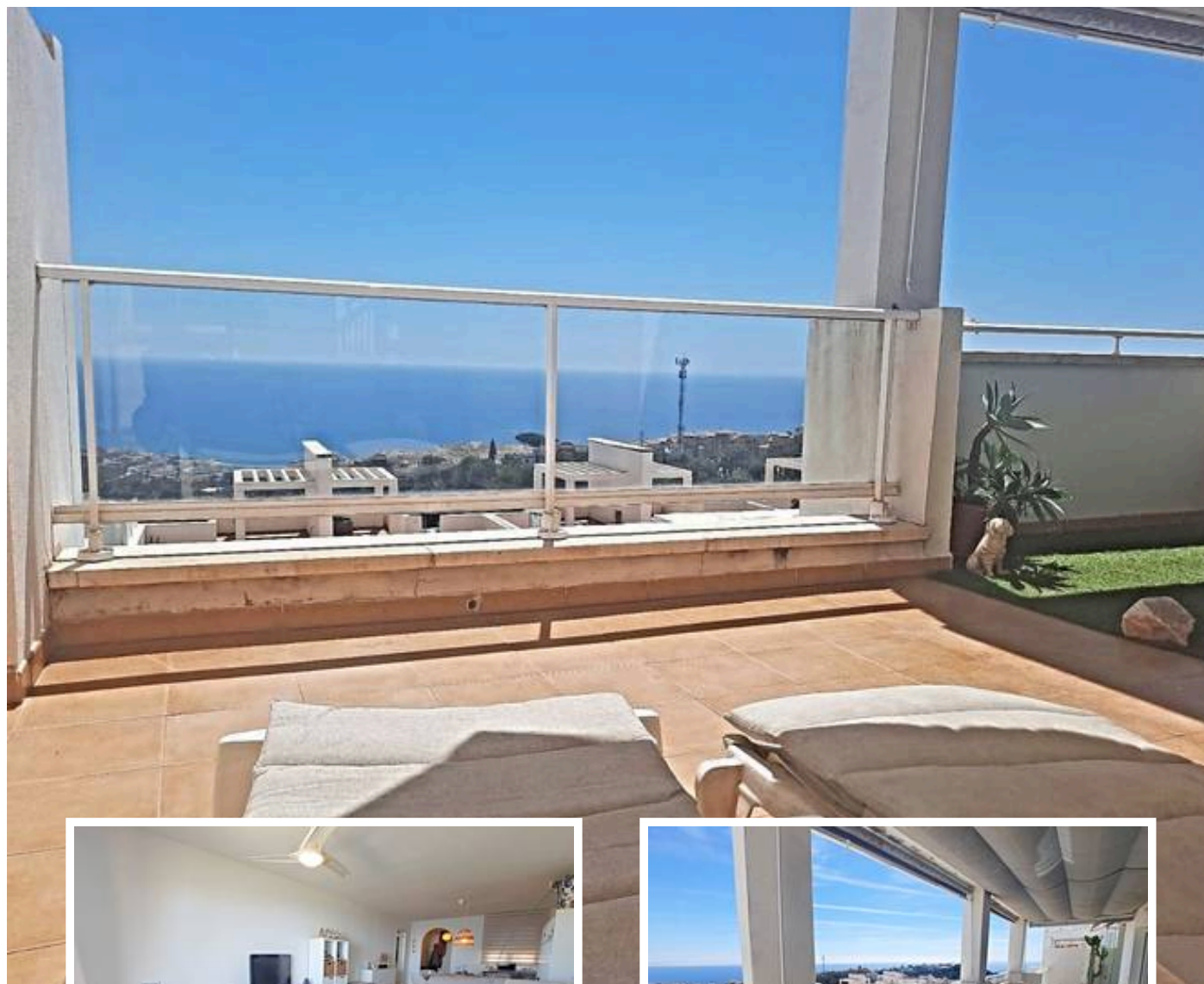
Bedrooms: 2

Bathrooms: 2

Built: 152m<sup>2</sup>

Plot: 1m<sup>2</sup>

Terrace: 47m<sup>2</sup>



Marbella

[info@bestliving.es](mailto:info@bestliving.es)

+34 747 471 108