



## New Development in Manilva

### Description

New Development: Prices from €390,000 to €650,000. [Bedrooms: 2 - 3] [Bathrooms: 2] [Built size: 82m<sup>2</sup> - 104m<sup>2</sup>]. A new residential development in Manilva, on the Costa del Sol, in the exclusive Bahía Las Rocas area. This is a privileged location between Punta Paloma and Chullera, known for its peaceful beaches, traditional beach bars, and the beautiful natural coastline with views of the Mediterranean Sea....

Price: **390.000 €**

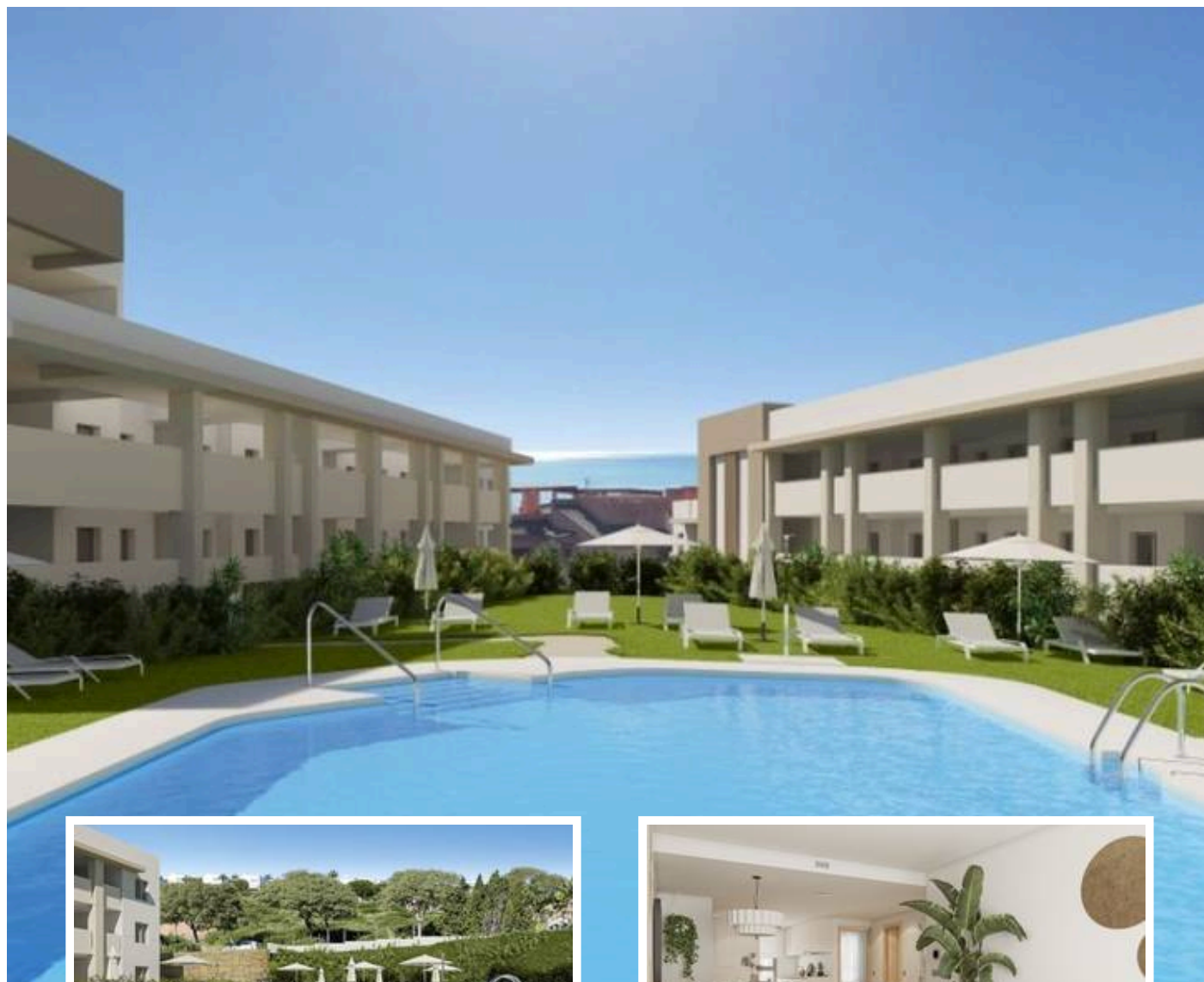
Bedrooms: 2

Bathrooms: 2

Built: 82m<sup>2</sup>

Plot:

Terrace: 30m<sup>2</sup>



Marbella

[info@bestliving.es](mailto:info@bestliving.es)

+34 747 471 108