

Middle Floor Apartment in Punta Chullera

Description

This attractive apartment located in the well-established Punta Paloma residential complex in La Duquesa offers an excellent combination of space, comfort, and location. Situated on a middle floor, it features 143 m² of built area and a 28 m² southeast-facing terrace, ensuring abundant natural light throughout most of the day and pleasant views over the communal swimming pool.

...

Price: **359.000 €**

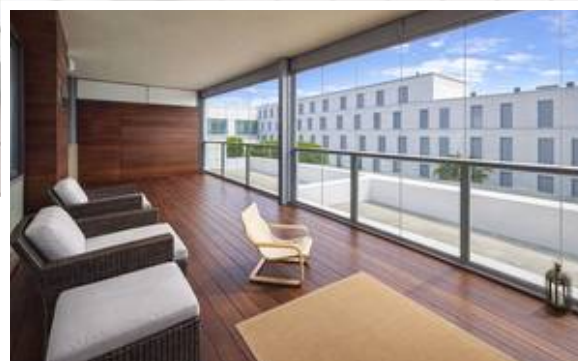
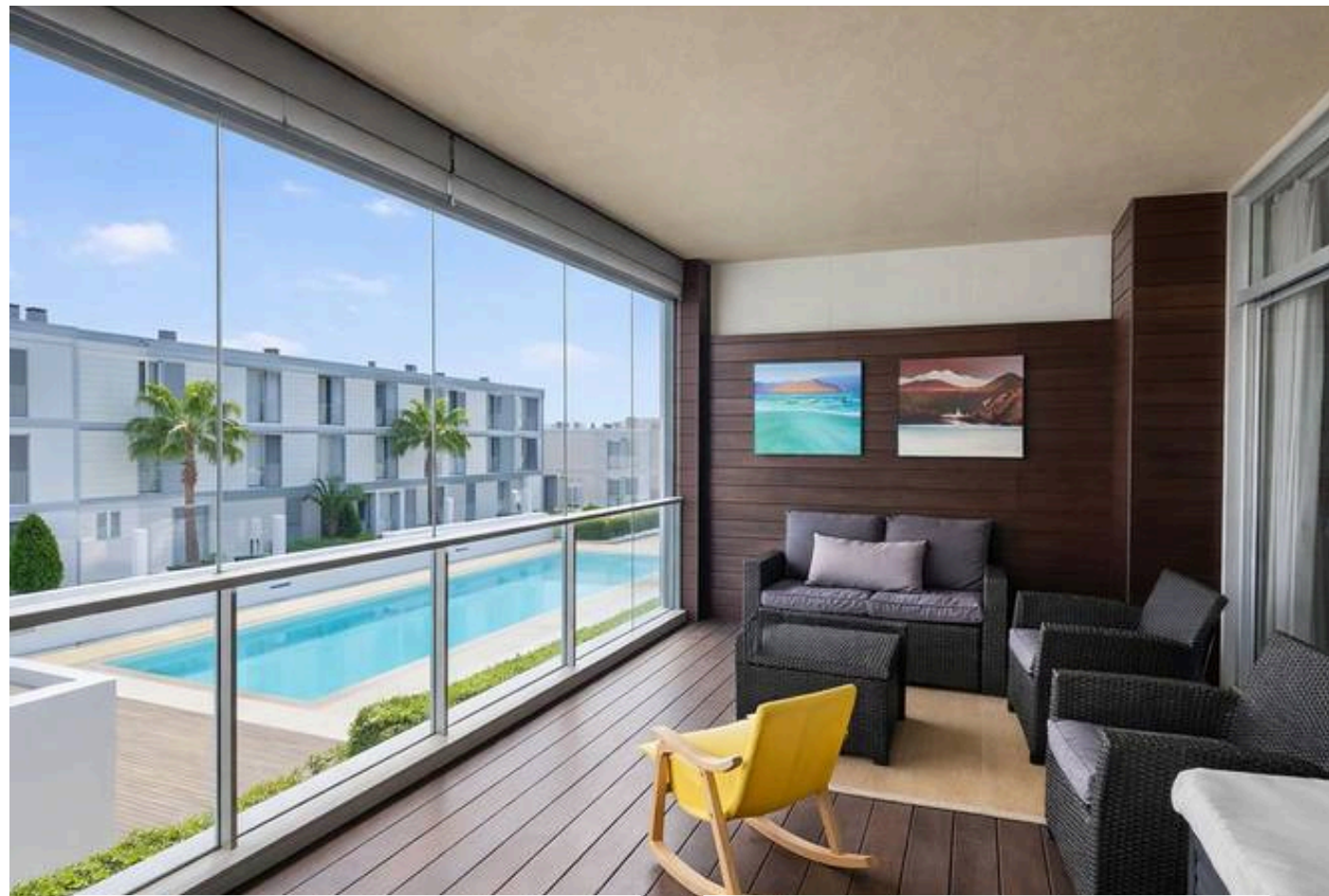
Bedrooms: 3

Bathrooms: 2

Built: 162m²

Plot:

Terrace: 28m²



Marbella

info@bestliving.es

+34 747 471 108