



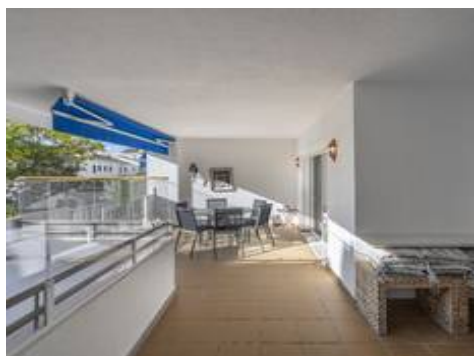
Middle Floor



Puerto Banús

690.000 €

2 2 110m² 20m²



Description

Two-bedroom, two-bathroom flat with a spacious living/dining room opening onto a large terrace. Kitchen plus utility room. One parking space included in the price.

The master bedroom also has access to the large west-facing terrace.

Gated community with 24-hour security. Large gardens, paddle tennis court and swimming pool.

Close to all amenities such as restaurants, supermarkets, gym, pharmacy and 200 metres from Puerto Banús beach.





