

Ground Floor

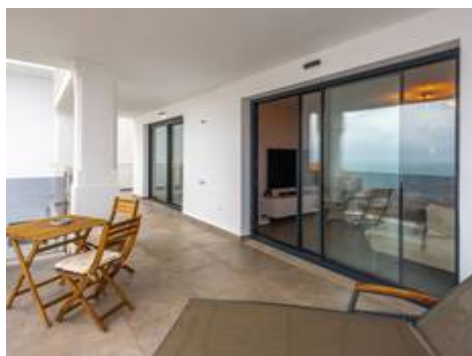


425.000 €



Punta Chullera

3 2 120m² 34m²



Description

SEA FACING DEVELOPMENT, WALK TO THE BEACHES. Ideally located only 200 meters from the golden beach of Punta Paloma in Manilva and just a few minutes drive to the charming LA DUQUESA PORT & SOTOGRANDE with its restaurants, cafés and bars. This luxury 3 bedroom apartment overlooking the Mediterranean Sea with a beautiful SWIMMING POOL terrace. A fabulous location on a hilltop position to guarantee splendid PANORAMIC SEA VIEWS . The apartment include a storage room and a parking space that can be directly accessed through a lift. The apartment benefits from a fiber optic Internet and telephone, „Toshiba“ air conditioning throughout and a 75% ENERGY SAVING SYSTEM on hot water. The complex benefits from a 24 hour security with video surveillance to ensure a total piece of mind. The communal areas consist of 2 large pools, a 260m2 STATE OF THE ART WELLNESS CENTRE (also with fabulous sea views) featuring an INDOOR POOL, sauna, lounge area and a gym. Only 15 minutes from charming Estepona and Malaga International Airport is only an hour away.

GREAT INVESTMENT WITH PROVEN RENTAL HISTORY WITH TOURIST LICENCE.



