

Description

Welcome to this impressive ground floor apartment in the prestigious Artola Homes development, offering four bedrooms, three bathrooms, and an exceptional sense of space across two levels.

Perfectly situated on the edge of the golf course, the property enjoys open views of the fairways, creating a serene and picturesque backdrop for everyday living.

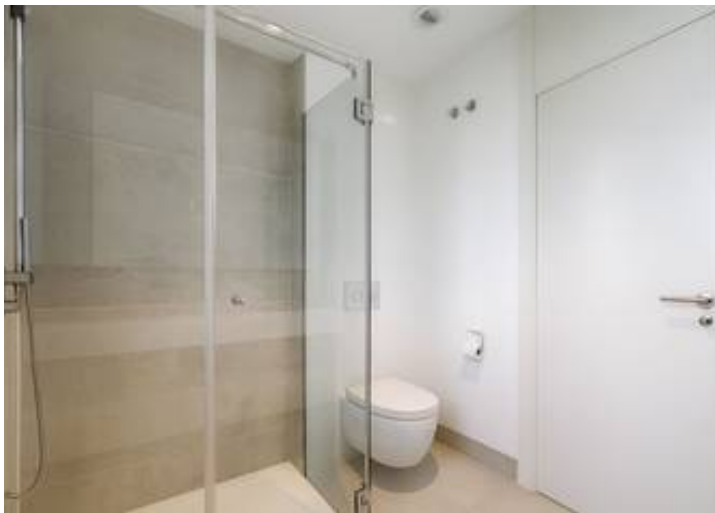
The main floor features a bright and spacious open-plan living and dining area, where large sliding doors connect seamlessly to the private terrace - the ideal spot to relax while taking in the sweeping golf views.

The sleek, fully fitted kitchen blends modern style with everyday practicality, making it a natural hub of the home.

On this floor you'll also find the elegant master bedroom with its own en-suite bathroom and direct access to the terrace, alongside another well-proportioned bedroom with access to a private garden, and a second bathroom for guests and family alike.

...













1/4" TO SCALE
location floor



1/4" TO SCALE
second floor

