

## Description

Newly Renovated Villa with Sea Views & Guest Apartment in Torremuelle, Benalmádena

Set in the quiet and well-connected area of Torremuelle, this newly renovated villa combines stunning views with everyday convenience. With an international school, train station, cafés, shops, paddle club, and bus stops all within walking distance, the location offers an ideal balance between peaceful living and easy access to amenities.

Property Highlights:

- \* Newly renovated throughout
- \* Private garage - 29m<sup>2</sup>
- \* Short walk to beach, international school, paddle club, train, and dining
- \* 4 bedrooms and 3 bathrooms + guest toilet
- \* Includes fully independent guest apartment with kitchen and bathroom
- \* Heated saltwater infinity pool...







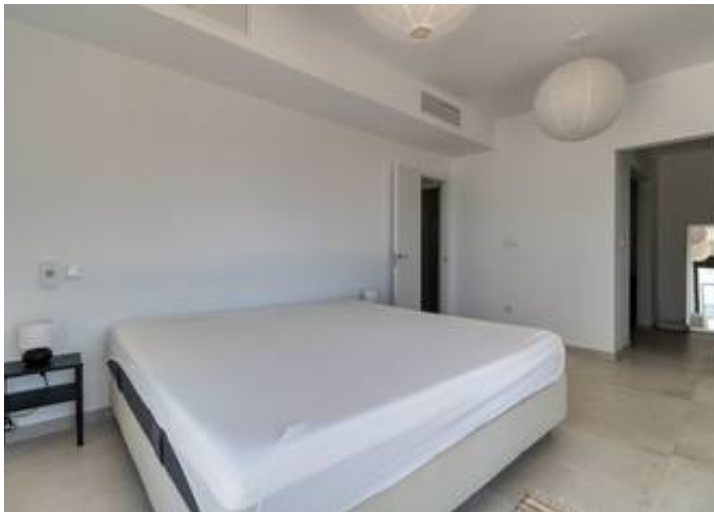


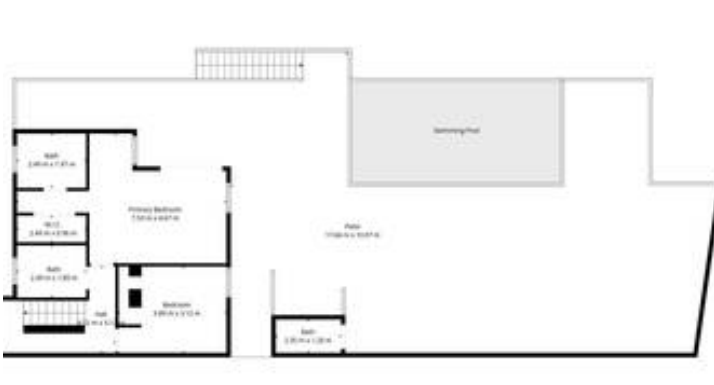
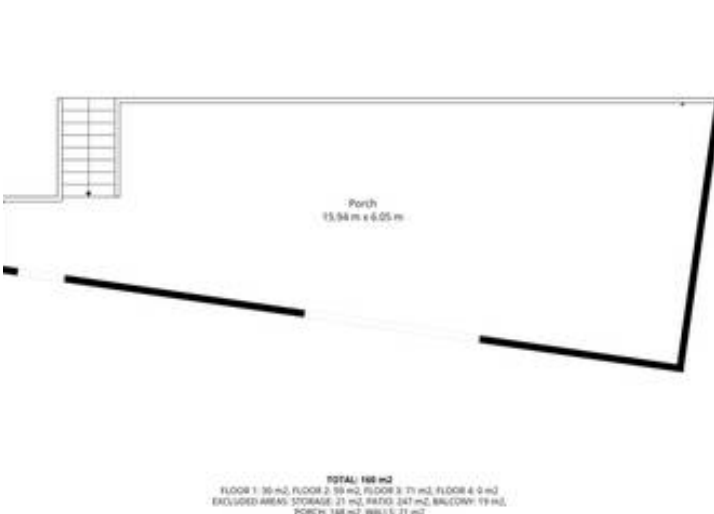


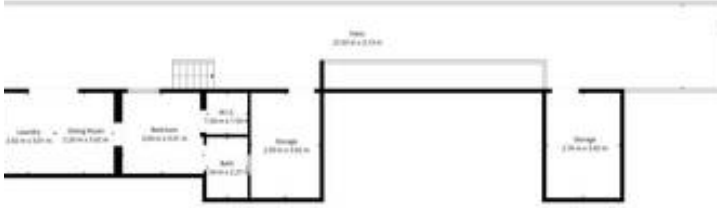












**TOTAL: 180 m²**  
FLOOR 1: 30 m², FLOOR 2: 15 m², FLOOR 3: 71 m², FLOOR 4: 0 m²  
EXCLUDED AREAS: STORAGE: 21 m², RATIO: 247 m², BALCONY: 19 m²  
PORCH: 1.68 m², 0.00 m², 0.71 m²