

Description

****Single-family house for sale****

We present this magnificent single-family house with 564 m² of built area, a spacious and versatile property ideal for families seeking comfort and room to breathe. Distributed across 4 bedrooms and 4 bathrooms, this home offers the space needed for each family member to enjoy their own privacy.

Built in 2006 and maintained in excellent condition, the property combines structural solidity with modern comfort. It has exposure in all directions, allowing excellent natural light throughout the day. Built-in wardrobes maximize storage, while the additional storage room provides extra space for belongings.

The house features a large terrace and balcony, perfect spaces for enjoying the outdoors, relaxing, or sharing moments with family and friends. The climate control system, with a heat pump, ensures a pleasant temperature in both winter and summer, providing comfort all year round....

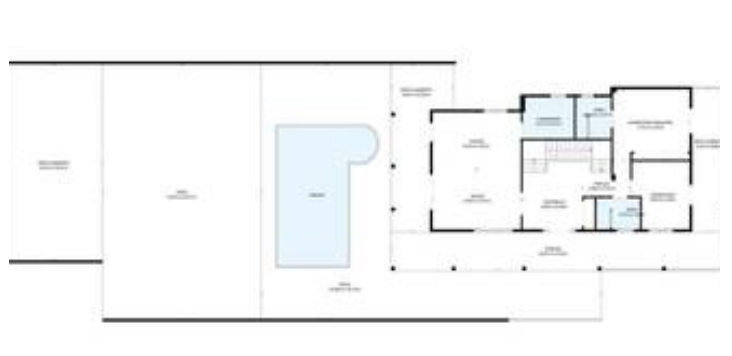












TOTAL: 323 m²
 Planta baja: 112 m², 1^o piso: 126 m², 2^o piso: 85 m², 3^o piso: 0 m²
 ÁREAS EXCLUIDAS: GARAJE: 30 m², ALMACENAMIENTO: 8 m², PATIO CUBIERTO: 1,21 m²,
 PISCINA: 1,23 m², PORCHE: 49 m², VANO: 2 m²,
 BALCÓN: 1,22 m², TERRAZA: 11 m², MURDID: 18 m²

TOTAL: 323 m²
 Planta baja: 112 m², 1^o piso: 126 m², 2^o piso: 85 m², 3^o piso: 0 m²
 ÁREAS EXCLUIDAS: GARAJE: 30 m², ALMACENAMIENTO: 8 m², PATIO CUBIERTO: 1,21 m²,
 PISCINA: 1,23 m², PORCHE: 49 m², VANO: 2 m²,
 BALCÓN: 1,22 m², TERRAZA: 11 m², MURDID: 18 m²



TERRAZA
14.42 m x 3.78 m

TOTAL: 323 m²
 Planta Baja: 112 m², 1^o piso: 128 m², 2^o piso: 85 m², 3^o piso: 0 m²
 ÁREAS EXCLUIDAS: GARAJE: 38 m², ALMACENAMIENTO: 8 m², PATIO CUBIERTO: 121 m²
 PATIO: 1/3 m², PORCHE: 45 m², VANO: 2 m²
 BALCONES: 127 m² TERRAZA: 11 m² MURDIN: 18 m²

TOTAL: 323 m²
 Planta Baja: 112 m², 1^o piso: 128 m², 2^o piso: 85 m², 3^o piso: 0 m²
 ÁREAS EXCLUIDAS: GARAJE: 38 m², ALMACENAMIENTO: 8 m², PATIO CUBIERTO: 121 m²
 PATIO: 1/3 m², PORCHE: 45 m², VANO: 2 m²
 BALCONES: 127 m² TERRAZA: 11 m² MURDIN: 18 m²



TOTAL: 323 m²
 Planta Baja: 112 m², 1^o piso: 128 m², 2^o piso: 85 m², 3^o piso: 0 m²
 ÁREAS EXCLUIDAS: GARAJE: 38 m², ALMACENAMIENTO: 8 m², PATIO CUBIERTO: 121 m²
 PATIO: 1/3 m², PORCHE: 45 m², VANO: 2 m²
 BALCONES: 127 m² TERRAZA: 11 m² MURDIN: 18 m²