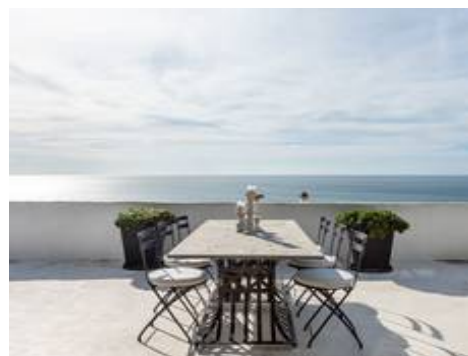


Detached Villa in Manilva

1.495.000 €

3 4 346m² 949m² 122m²



Description

Magical Home in Punta Chullera!

Welcome to an extraordinary home in the sought-after area of Punta Chullera – known for its peaceful atmosphere and some of the very best views on the Costa del Sol.

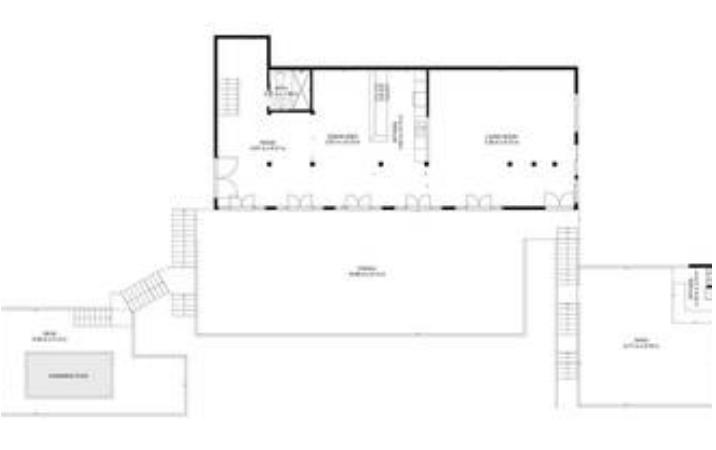
The house features three bedrooms but also offers exceptionally spacious living areas, with the possibility to create additional bedrooms if desired. The view is truly spectacular – from all bedrooms and social areas you are greeted by a sweeping sea view that is arguably one of the best along the entire coast. The location is close to the beach, just a few minutes' walk from one of the Costa del Sol's most beautiful beaches. The open-plan layout creates a bright and airy feel, and every room has direct access to its own terrace. The generous terraces, the mature and private garden, and the private pool make this home perfect for both relaxation and social gatherings.

...











TOTAL: 284 m²
BUILDING: 284 m² (FLOOR 2: 138 m², FLOOR 3: 150 m²)
EXCLUDED AREA: GARAGE: 43 m², BATH: 5 m², TOTAL: 48 m²
NET: 236 m², TOTAL: 236 m² (FLOOR 2: 138 m², FLOOR 3: 150 m²)
CONSTRUCTION: 1 m² (FLOOR 2: 138 m², FLOOR 3: 150 m²)