

Description

Detached Villa for Sale in Nueva Andalucía, Marbella – Prime Location with Sea Views

Located in one of Marbella's most sought-after areas, this magnificent detached villa sits on a generous corner plot of 1,755 m² in the prestigious Avenida del Generalife 28. South-southwest facing, it boasts breathtaking views of the sea and Gibraltar. The property enjoys a strategic location that offers both privacy and tranquillity, while being perfectly connected to all amenities, international schools, renowned golf courses, and the glamour of Puerto Banús.

With a total built area of 700 m² (as per the Cadaster or land registry), the villa offers generous living spaces, ideal for family life. The ground floor features a spacious living room of over 40 m², a separate dining area, a large study, guest WC, and a fully equipped kitchen with a service area including a good-sized bedroom and bathroom. The inviting covered terrace opens directly onto the beautifully maintained mature garden and private pool – the perfect setting to...

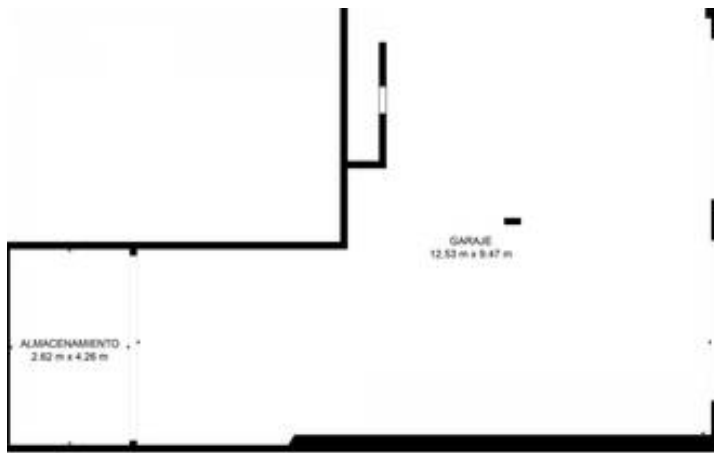












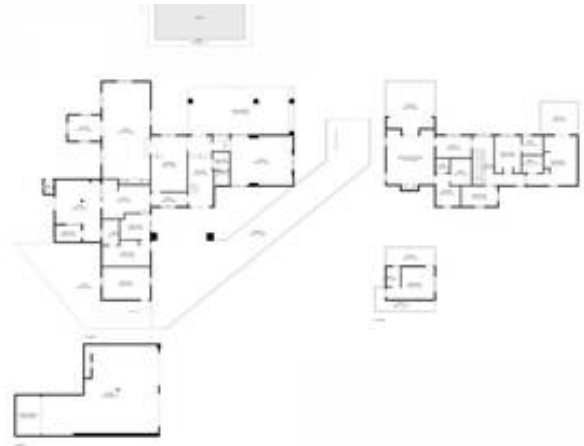
TOTAL: 271 m²
 SUPERFICIE CONSTRUIDA: 271 m²
 SUPERFICIE ALMACENAMIENTO: 271 m²
 SUPERFICIE GARAJE: 116 m²
 SUPERFICIE ALMACENAMIENTO: 155 m²
 SUPERFICIE PAVIMENTO: 155 m²
 SUPERFICIE VERDE: 155 m²



TOTAL: 271 m²
 SUPERFICIE CONSTRUIDA: 271 m²
 SUPERFICIE ALMACENAMIENTO: 271 m²
 SUPERFICIE GARAJE: 116 m²
 SUPERFICIE ALMACENAMIENTO: 155 m²
 SUPERFICIE PAVIMENTO: 155 m²
 SUPERFICIE VERDE: 155 m²



TOTAL: 271 m²
 SUPERFICIE CONSTRUIDA: 271 m²
 SUPERFICIE ALMACENAMIENTO: 271 m²
 SUPERFICIE GARAJE: 116 m²
 SUPERFICIE ALMACENAMIENTO: 155 m²
 SUPERFICIE PAVIMENTO: 155 m²
 SUPERFICIE VERDE: 155 m²



TOTAL: 271 m²
 SUPERFICIE CONSTRUIDA: 271 m²
 SUPERFICIE ALMACENAMIENTO: 271 m²
 SUPERFICIE GARAJE: 116 m²
 SUPERFICIE ALMACENAMIENTO: 155 m²
 SUPERFICIE PAVIMENTO: 155 m²
 SUPERFICIE VERDE: 155 m²