

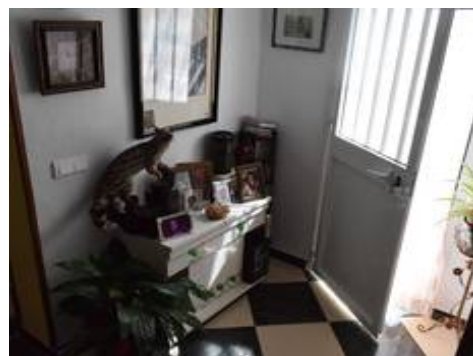


Detached

Viñuela

380.000 €

5 2 330m² 1.894m²



Description

This detached house is located in the area of Rio Bermuza, a 10 minutes drive to the village of Viñuela and only a 20 minute drive to the coast. The accommodation is distributed on two floors and comprises a hallway, large lounge/dining room with a fireplace, a fully fitted kitchen, 5 spacious bedrooms, 2 bathrooms and a huge garage for 3 cars. There are several terraces, a BBQ area with a storeroom, a pool area, and a garden.

Beautiful views of the mountains.

