

# Detached Villa in Benalmadena Costa

## Description

DETACHED HOUSE WITH A PLOT OF 636 M2 IN THE HEART OF BENALMÁDENA COSTA IN THE PLAZA SOLYMAR AREA LESS THAN 500 METERS FROM PUERTO MARINA. It is distributed on two floors: The main floor is distributed with a large living room with a large window with direct access to the pool area. Fully furnished and equipped independent kitchen. 1 exterior double bedroom. 1 full bathroom with shower. Large entran...

Price: **890.000 €**

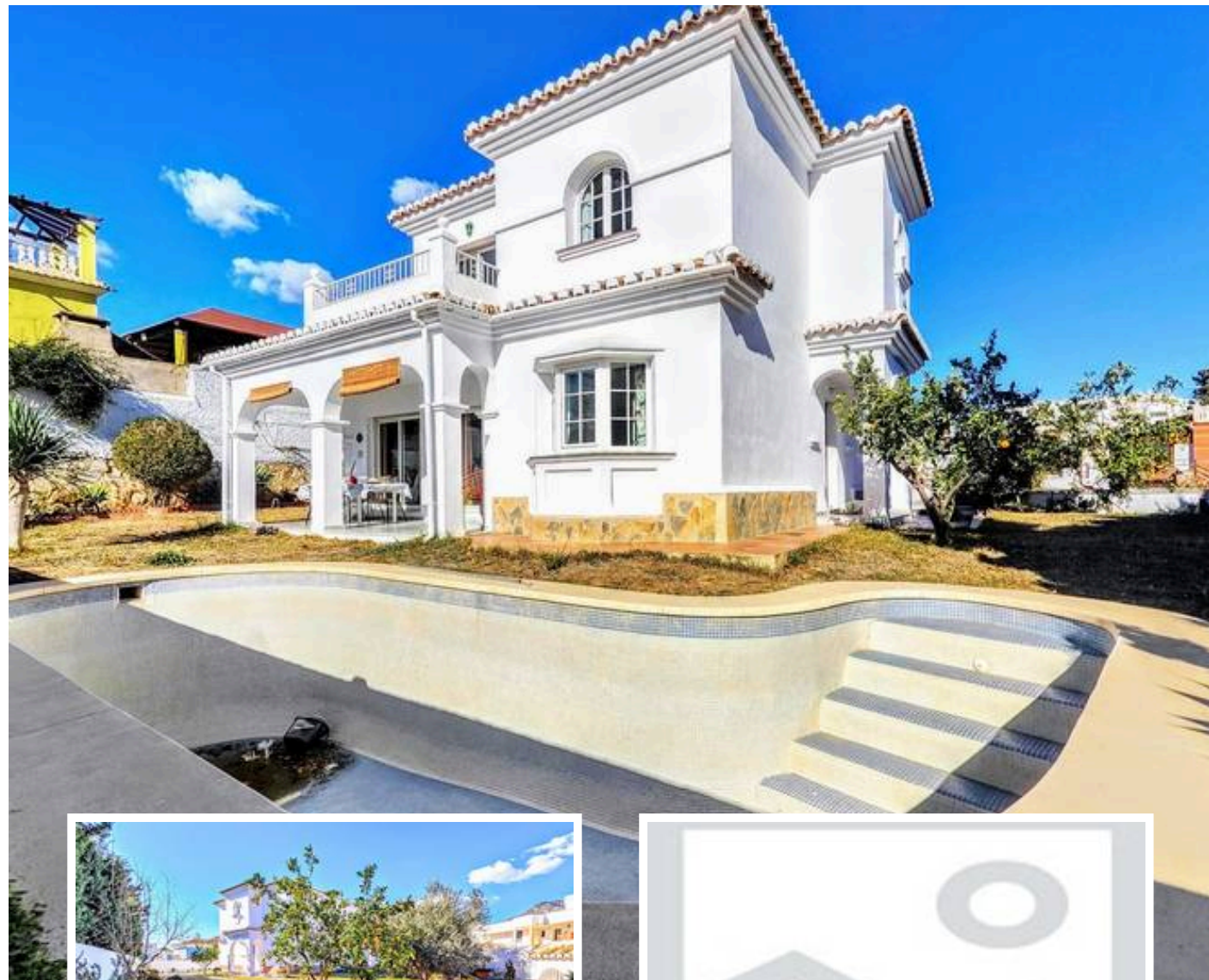
Bedrooms: 4

Bathrooms: 2

Built: 206m<sup>2</sup>

Plot: 636m<sup>2</sup>

Terrace: 20m<sup>2</sup>



Marbella

[info@bestliving.es](mailto:info@bestliving.es)

+34 747 471 108