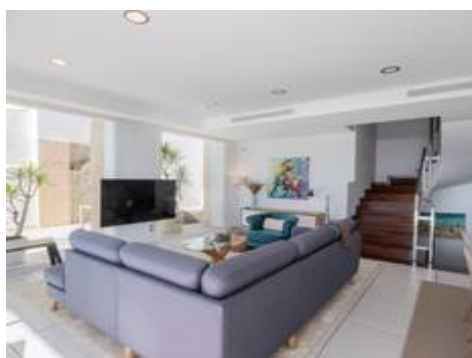




Detached Villa in Torremuelle

1.150.000 €

4 5 358m²



Description

Modern villa with spectacular panoramic views of the Mediterranean, located in one of the most exclusive areas of Benalmádena, next to the Casablanca natural park. In a peaceful setting close to the village, this south-facing, bright property offers spacious terraces, large windows, and a sophisticated design that seamlessly blends indoor and outdoor living. It also features installed solar panels for greater energy efficiency.

Distributed across three floors connected by a private lift, it includes four en-suite bedrooms, a guest toilet, a fully equipped kitchen, a laundry room, and an additional 40 m² living area on the garden level.

The development offers an elegant social club with a swimming pool, gym, and privileged views of the sea and the bay of Fuengirola.

Excellent location, just 800 meters from the Torremuelle train station and close to all amenities.







