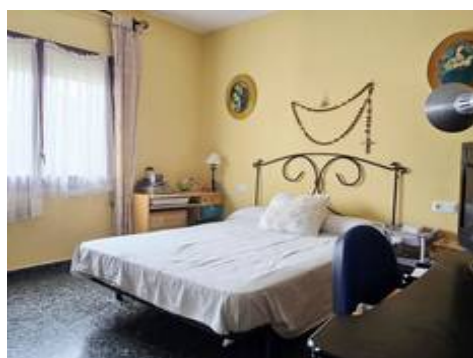




Detached Villa in the heart of the Victoria

840.000 €

4 3 145m² 650m²



Description

Set on a generous and private plot of approximately 750 m², this property is thoughtfully arranged across a single level, offering a harmonious blend of comfort, space, and effortless flow. With additional development potential, it also represents an outstanding long-term investment opportunity.

The villa provides 148 m² of built area, featuring four spacious bedrooms and three bathrooms, carefully designed to accommodate both family living and guest entertainment with ease.

At the heart of the home is a bright and welcoming living and dining area, complete with a feature fireplace and direct access to the surrounding outdoor spaces, creating a seamless indoor-outdoor lifestyle. The separate kitchen, which opens onto a charming rear patio, is both functional and full of possibilities.

A notable feature of the property is the independent guest studio with its own bathroom, making it ideal for visitors, extended family, or use as a private office ...







