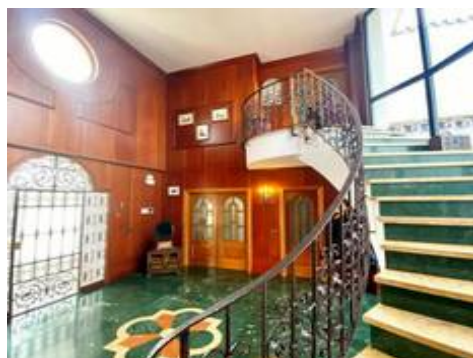


Detached

Benalmádena

1.595.000 €

6 5 814m² 2.238m²



Description

Exclusive Villa with Panoramic Views in Benalmádena

We present a spectacular detached villa located in one of the most sought-after residential areas of the Costa del Sol. This property perfectly combines elegance, spaciousness, and comfort, offering an unparalleled lifestyle in a privileged natural environment, just steps from the prestigious golf course, international schools, supermarkets, and only a few minutes from the beach.

Built on a large plot of 2,238 m², the villa enjoys complete privacy, excellent orientation, and open panoramic views of the mountains and surrounding natural landscape.

Exclusive Design and Bright Spaces

With over 800 m² of built area, the house is spread over three levels designed to offer comfort, functionality, and quality of life:...

