

Land in Benahavís

More info:

This is a very rare opportunity to purchase an elevated plot with golf, mountain and sea views located within the peaceful urbanisation of Puerto del Almendro. This contemporary villa project has been designed by renowned Marbella architect Cesar de Leyva and he has created a stunning, easily maintained home which would make an excellent second home or holiday rental. This modern, south and south west facing house is distributed over four floors, with terraces on...

Price: **795.000 €**

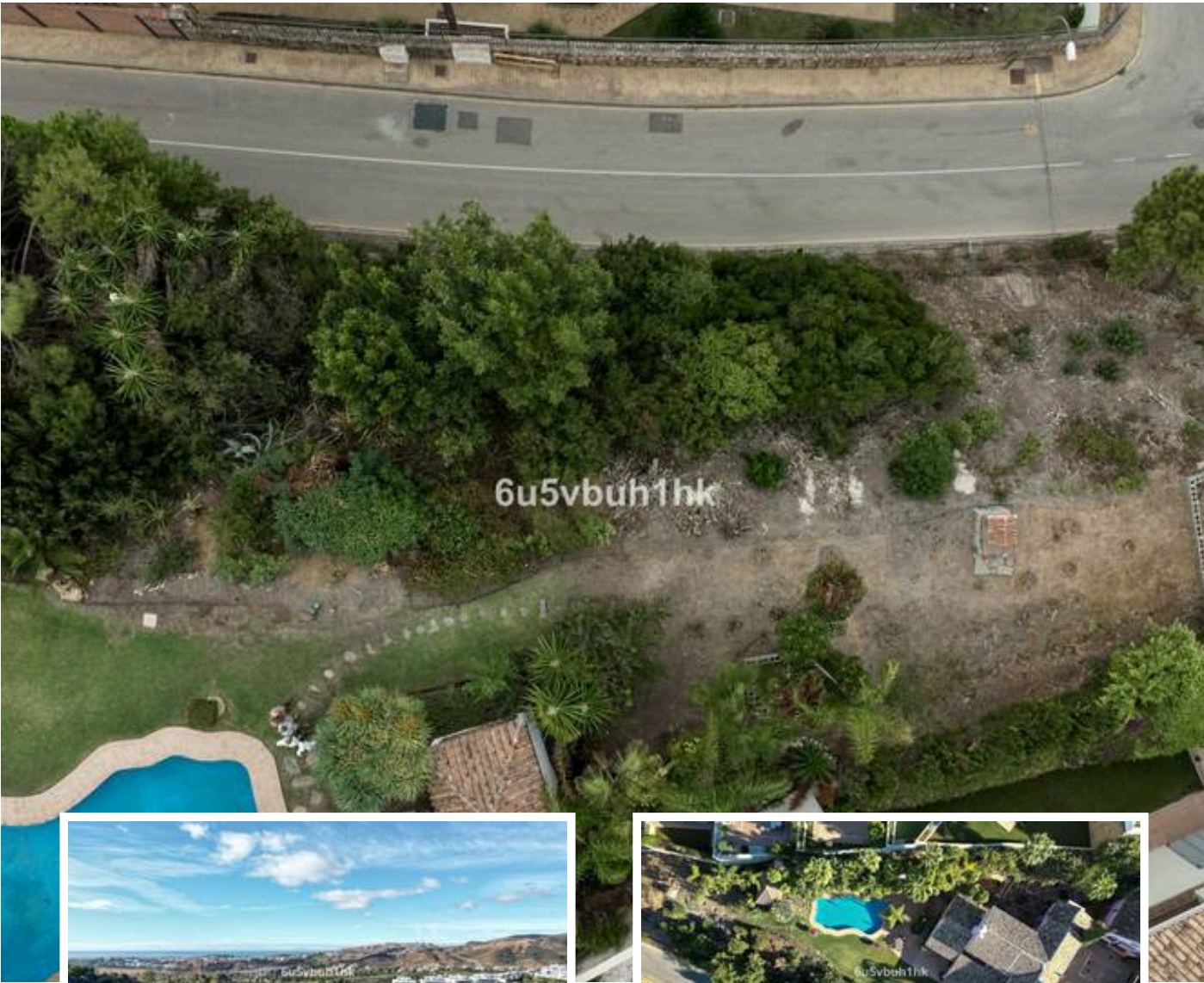
Bedrooms: 0

Bathrooms: 0

Built:

Plot: 512m²

Terrace:



Marbella
info@bestliving.es
+34 747 471 108