



Commercial Plot in Marbella

More info:

It is land that is divided into 2 parts, of which 4,400 meters are for commercial use and the adjoining 3,400 meters are rustic land. It is very well located with access to the highway and Marbella, as it is situated right at a turnaround to enter Marbella or exit to the highway, and it has sea views.

Price: **7.000.000 €**

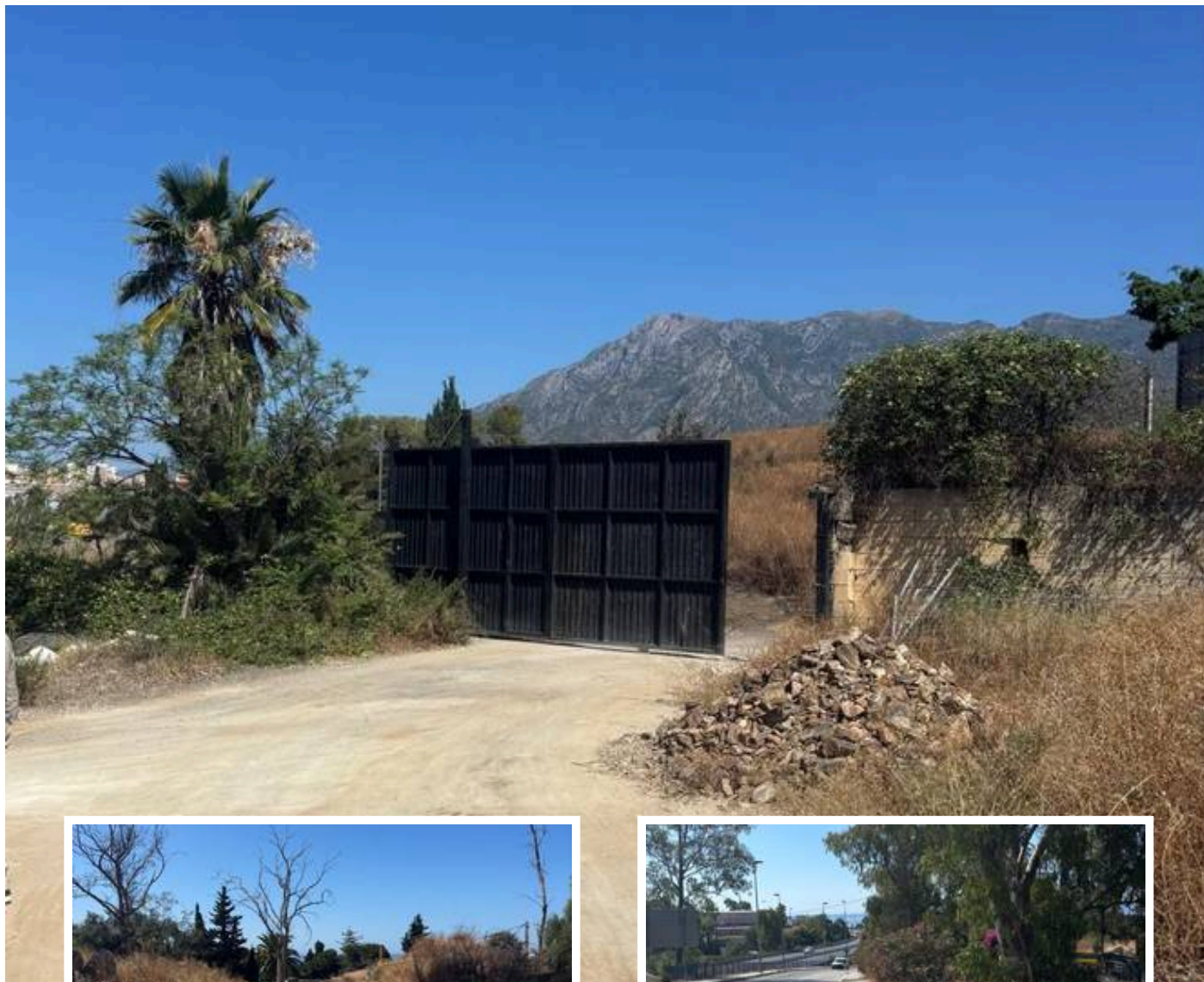
Bedrooms: 0

Bathrooms: 0

Built:

Plot: 7m²

Terrace:



Marbella

info@bestliving.es

+34 747 471 108