



Semi-Detached House in Torreblanca

Description

Stunning 255 m² Semi-Detached Home with Attic Suite, Basement, Double Garage and Communal Pool

Discover this exceptional 255 m² semi-detached property, thoughtfully distributed across four levels and designed to offer space, comfort and versatility for modern family living. Bright, spacious and move-in ready, this home is equally suitable as a permanent residence or an investment...

Price: **499.000 €**

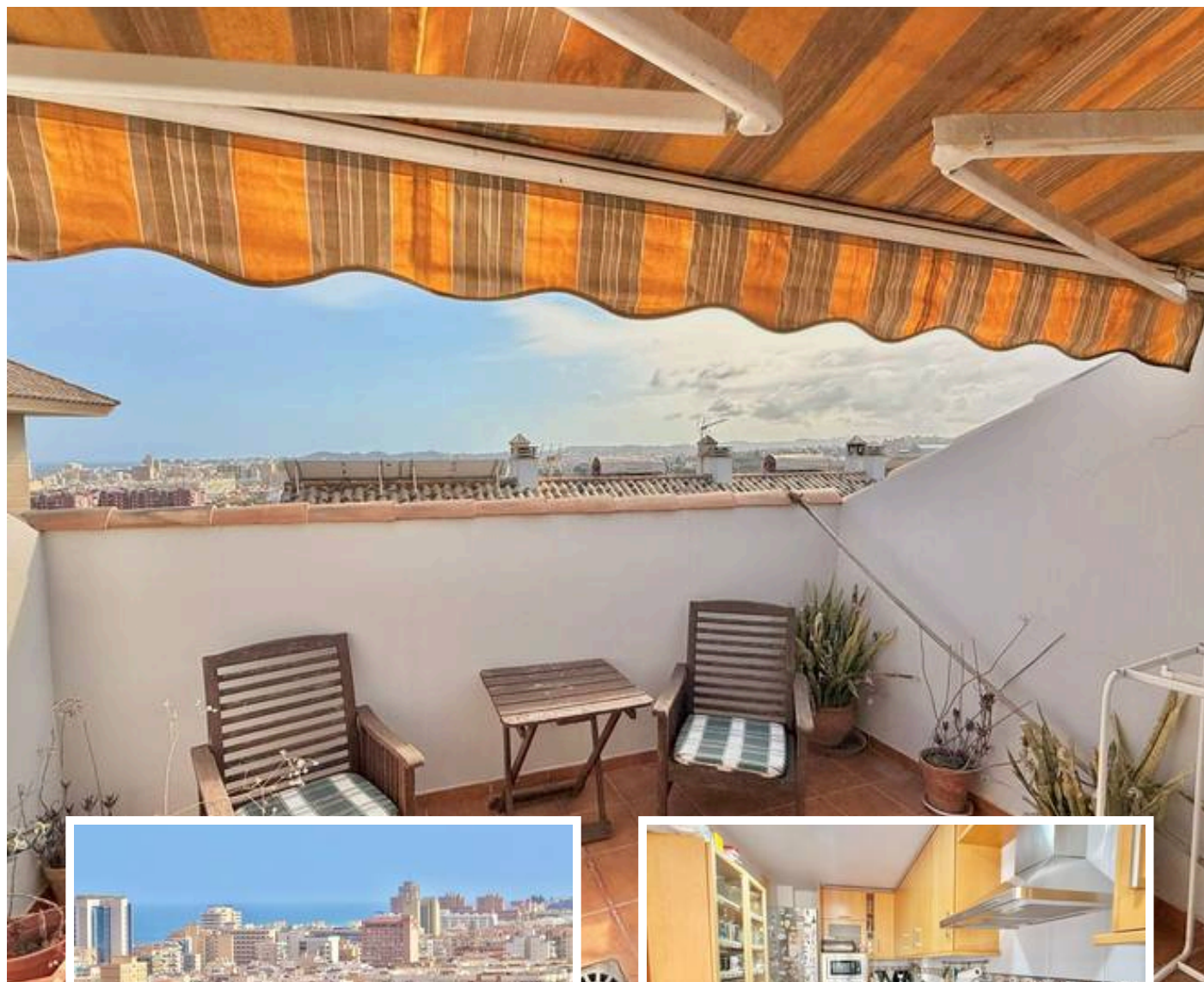
Bedrooms: 3

Bathrooms: 3

Built: 255m²

Plot:

Terrace: 30m²



Marbella

info@bestliving.es

+34 747 471 108