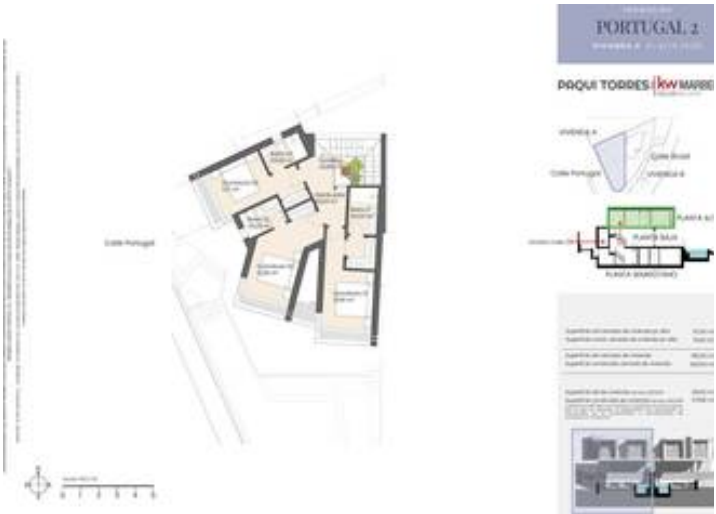
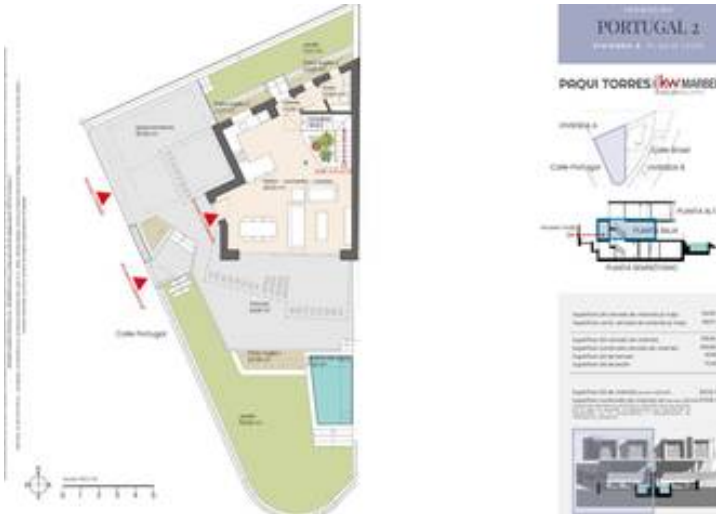
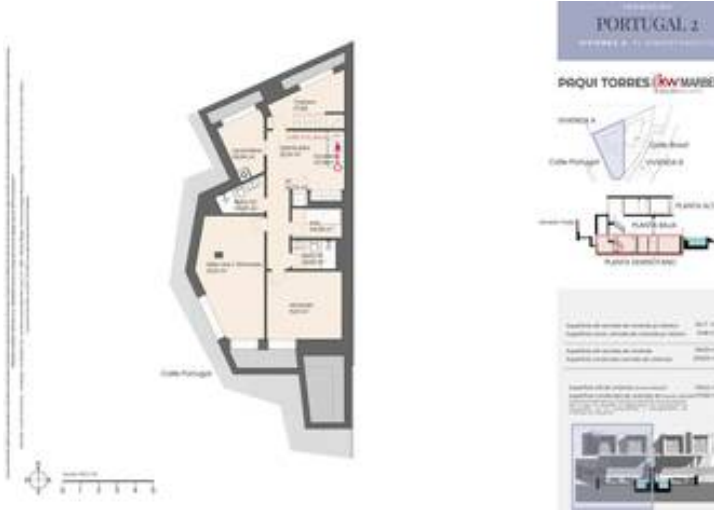


## Description

A Cutting-Edge Haven in the Heart of Pedregalejo! Imagine waking up to the soft Mediterranean light, enjoying a coffee on your private terrace, and deciding whether the day calls for a stroll along the beach or relaxing by your own pool. At Calle Portugal, 2, a residential project that redefines luxury is born: a newly built semi-detached villa where modern architecture merges with the soul of Pedregalejo, one of Málaga's most emblematic and charming neighborhoods. This exclusive three-story home has been designed to offer maximum comfort and an unparalleled lifestyle. The ground floor opens up to a spectacular living, dining, and kitchen space that flows seamlessly to the exterior terraces, creating the perfect atmosphere for entertaining. On the upper floor, three magnificent bedrooms, each with its en-suite bathroom, ensure privacy and rest. Additionally, a versatile basement level offers a world of possibilities: a cinema room, a private gym, or a play area. To live here is to savor the best of Málaga. It's strolling through a neighborhood that preserves the charm of its fishing origins, with its picturesque houses and traditional "jábega" boats on the shore. It's enjoying the traditional "espetos" at the beachside restaurants...









### CLIMATIZACIÓN Y A.C.S.

INSTALACIÓN DE **AIR-CONDITION** PARA LA  
REFRIGERACIÓN DE A.C.S. Y  
CLIMATIZACIÓN MEDIANTE COMBUSTIÓN  
CON EXHAUSTIÓN DIRECTA.



### ENERGÍA FOTOVOLTAICA PARA SUMINISTRO ELÉCTRICO

ENERGÍA FOTOVOLTAICA PARA  
SUMINISTRO ELÉCTRICO, CONECTADO A  
RENDIRSE UN ANEXO DE ALERÍA, UN SEÑAL  
EN EL CONJUNTO DE ELECTRICIDAD.



### EXTRAS

POZOS Y JARDIN PERSONAL, ZONAS  
EXTERIORES, INSTALACIÓN DE VESTIDO  
PATIO.

## MEMORIA DE CALIDADES PORTUGAL, 2



PAQUI TORRES | **kw**MARBELL  
RESIDENCIAL

Los contenidos que aparecen en estos documentos pueden ser modificados sin limitación por cualquier motivo.