

# Ground Floor Apartment in Manilva

## More info:

Modern Apartment with Sea Views and Private Terrace – La Paloma Manilva, Costa del Sol

This elegant apartment, measuring 105.9 m<sup>2</sup> (plus a 15.08 m<sup>2</sup> terrace), offers light, comfort, and a peaceful setting just 200 m from the beach. Located in a gated community with controlled access, it features a private covered terrace with soundproof glass enclosures and a parking space included....

Price: **379.000 €**

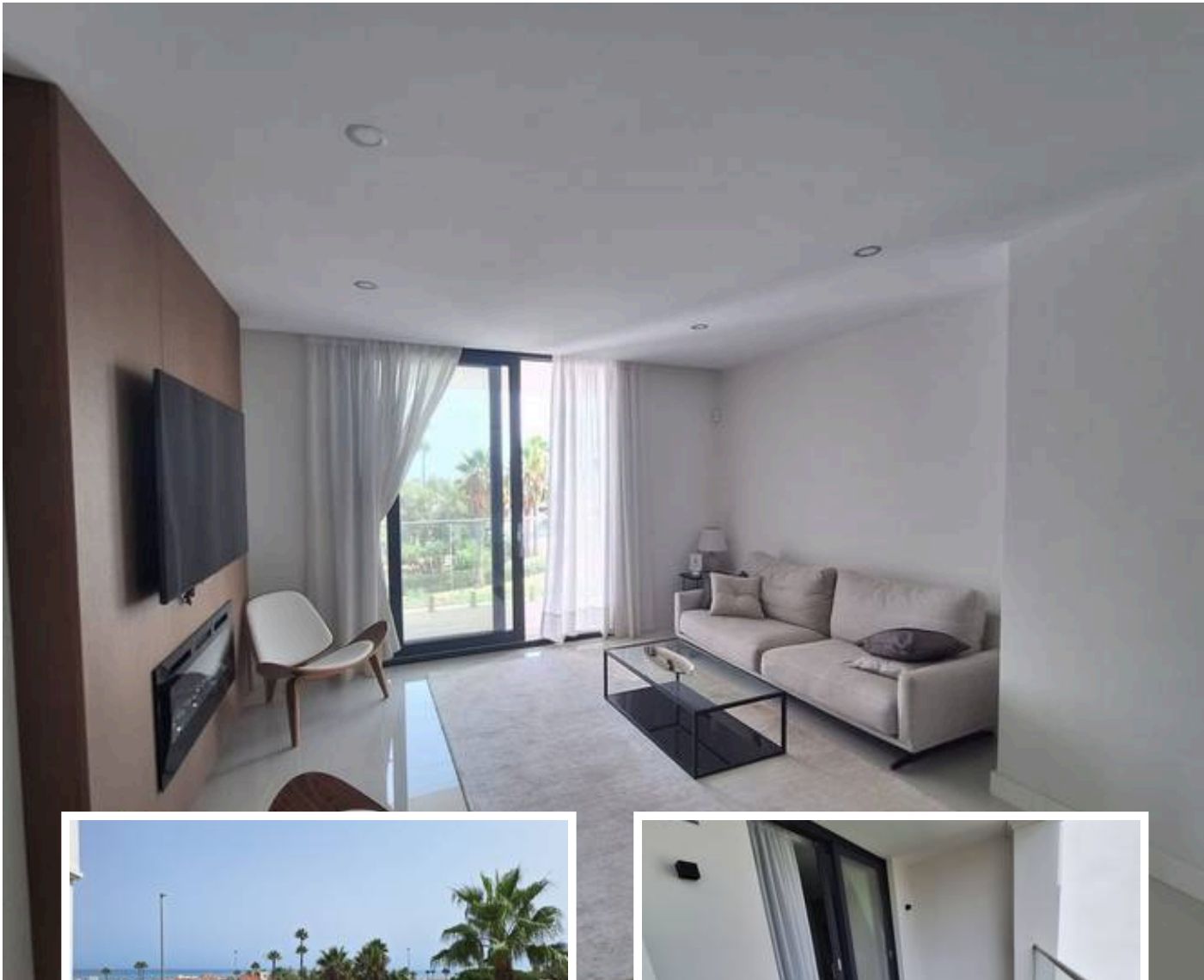
Bedrooms: 2

Bathrooms: 2

Built: 106m<sup>2</sup>

Plot:

Terrace: 15m<sup>2</sup>



Marbella  
info@bestliving.es  
+34 747 471 108