



## Townhouse in Manilva

### Description

Contemporary and luxurious four level family home offering stunning panoramic views only 10 minutes to Sotogrande.

This exceptional residence offers three double bedrooms, a spacious south-facing terrace, and an expansive rooftop solarium with panoramic views of the sea, mountains, Gibraltar, and Morocco.

...

Price: **795.000 €**

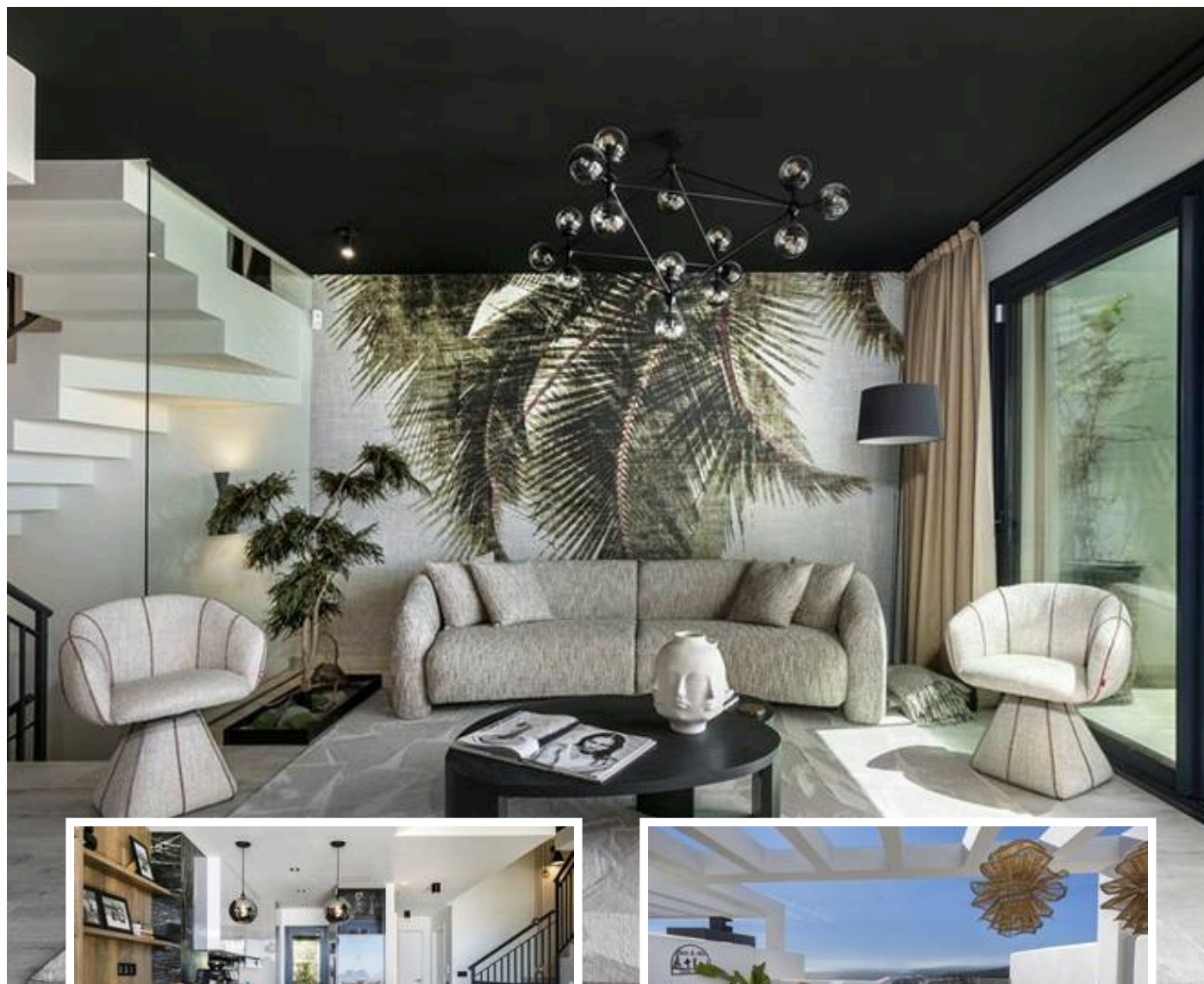
Bedrooms: 3

Bathrooms: 2

Built: 198m<sup>2</sup>

Plot:

Terrace: 102m<sup>2</sup>



Marbella

[info@bestliving.es](mailto:info@bestliving.es)

+34 747 471 108