

Tov

aya

477.500 €

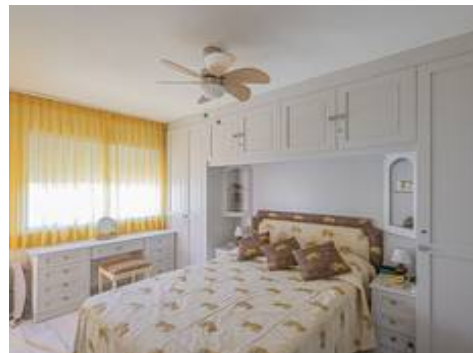
3

2.5

120m<sup>2</sup>

87m<sup>2</sup>

30m<sup>2</sup>



## Description

### HOUSE WITH LARGE PRIVATE GARDEN

Cozy semi-detached house with a large private garden, located in the Atalaya area, next to Guadalmina, close to all kinds of services such as schools, supermarkets, restaurants, sports centers, etc.

Comfortable property spread over two floors, with a total of three bedrooms, two bathrooms plus a toilet, a living room with a fireplace and a separate kitchen, and a porch area with a large private garden.

Located within a cozy, family-style gated community with communal gardens and a pool.

An ideal property for clients looking for a family home close to all kinds of services.









